

BYOC Vibrato Kit Instructions

BA6110 version

[<http://buildyourownclone.com/662.pdf>](http://buildyourownclone.com/662.pdf)

Please read these instructions very thoroughly before building even if you are an experience builder. Because of the layout, there is a certain order which must be followed.

1. Parts list.....	2 - 3
2. Populating the circuit board.....	4 - 10
3. Assembly.....	11
4. Wiring.....	12 - 14
5. Finishing up.....	15

PARTS CHECKLIST (BA6110 Version)

RESISTORS: Some kits may come with 1%metal film (light blue) or 5%carbon film(light brown)

- 1 - 100ohm (brown/black/black/black/brown) or (brown/black/brown/gold)
- 3 - 1k (brown/black/black/brown/brown) or (brown/black/red/gold)
- 1 - 2.7k (red/purple/black/brown/brown) or (red/purple/red/gold)
- 4 - 4.7k (yellow/purple/black/brown/brown) or (yellow/purple/red/gold)
- 1 - 6.8k (blue/gray/black/brown/brown) or (blue/gray/red/gold)
- 1 - 7.5k (purple/green/black/brown/brown) or (purple/green/red/gold)
- 1 - 8.2k (gray/red/black/brown/brown) or (gray/red/red/gold)
- 15 - 10k (brown/black/black/red/brown) or (brown/black/orange/gold)
- 3 - 15k (brown/green/black/red/brown) or (brown/green/orange/gold)
- 1 - 18k (brown/gray/black/red/brown) or (brown/gray/orange/gold)
- 4 - 33k (orange/orange/black/red/brown) or (orange/orange/orange)
- 8 - 47k (yellow/purple/black/red/brown) or (yellow/purple/orange/gold)
- 1 - 56k (green/blue/black/red/brown) or (green/blue/orange/gold)
- 4 - 100k (brown/black/black/orange/brown) or (brown/black/yellow/gold)
- 1 - 150k (brown/green/black/orange/brown) or (brown/green/yellow/gold)
- 1 - 180k (brown/gray/black/orange/brown) or (brown/gray/yellow/gold)
- 2 - 330k (orange/orange/black/orange/brown) or (orange/orange/yellow/gold)
- 2 - 470k (yellow/purple/black/orange/brown) or (yellow/purple/yellow/gold)
- 4 - 1Meg (brown/black/black/yellow/brown) or (brown/black/green/gold)

CAPACITORS:

- 1 - 100uf electrolytic
- 1 - 47uf electrolytic
- 1 - 10uf electrolytic
- 3 - 1uf electrolytic
- 1 - 0.47uf electrolytic
- 1 - 6.8uf tantalum
- 1 - .1uf film
- 4 - .047uf film
- 1 - .022uf film
- 2 - .01uf film
- 2 - .0068uf film
- 1 - .0047uf film
- 1 - .0039uf film
- 1 - .0027uf film
- 1 - 220pf ceramic disc
- 1 - 200pf ceramic disc
- 2 - 47pf ceramic disc
- 2 - 33pf ceramic disc

DIODES:

- 6 - 1N4148 or 1N914

TRANSISTORS:

- 4 - BC550 or 2SC732 (nnp CBE pinout)
- 7 - 2SC945 (nnp ECB pinout)
- 3 - 2SA733 (pnp EBC pinout)

ICs:

- 1 - BA6110 vca
- 1 - 3207 bbd
- 1 - 3102 clock
- 1 - 4558 op amp
- 1 - TL022 or 4558 op amp

POTENTIOMETERS:

- 1 - 10k trimpot
- 1 - 500k trimpot
- 1 - B50k (depth)
- 1 - A250k (rise time)
- 1 - C250k (rate)

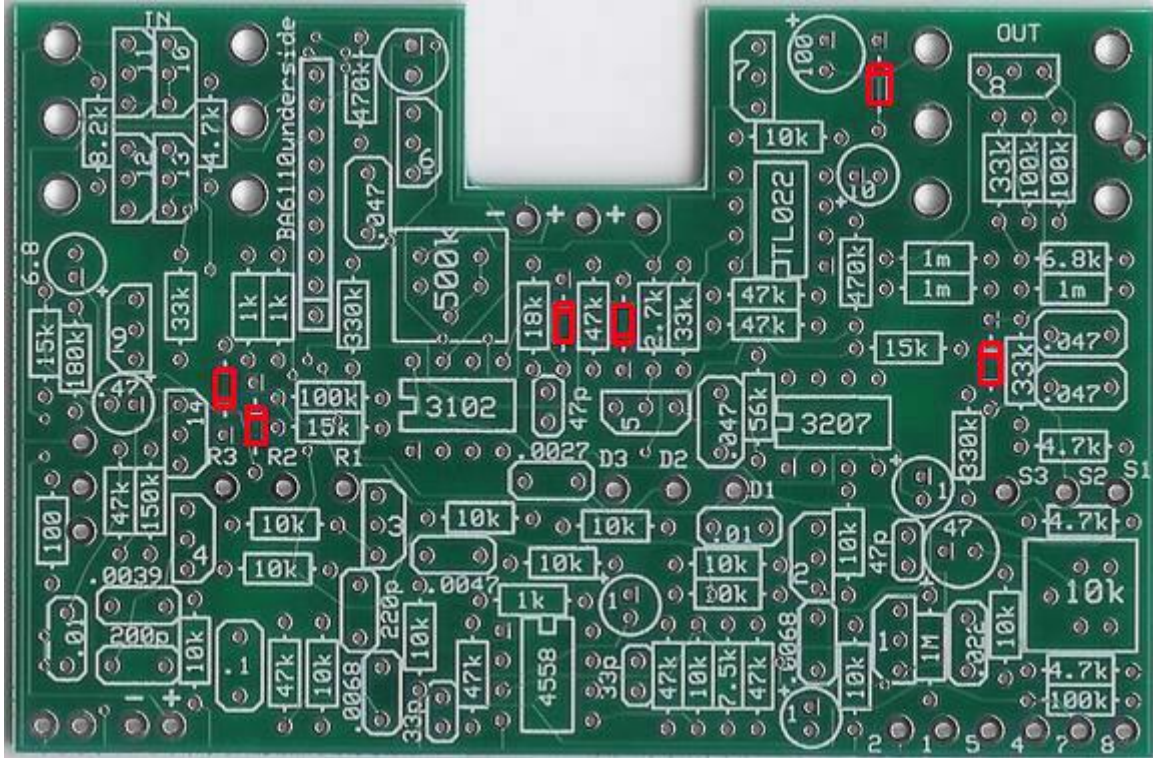
SWITCHES:

- 1 - 3PDT footswitch
- 1 - SPST momentary footswitch
- 1 SPDT toggle switch

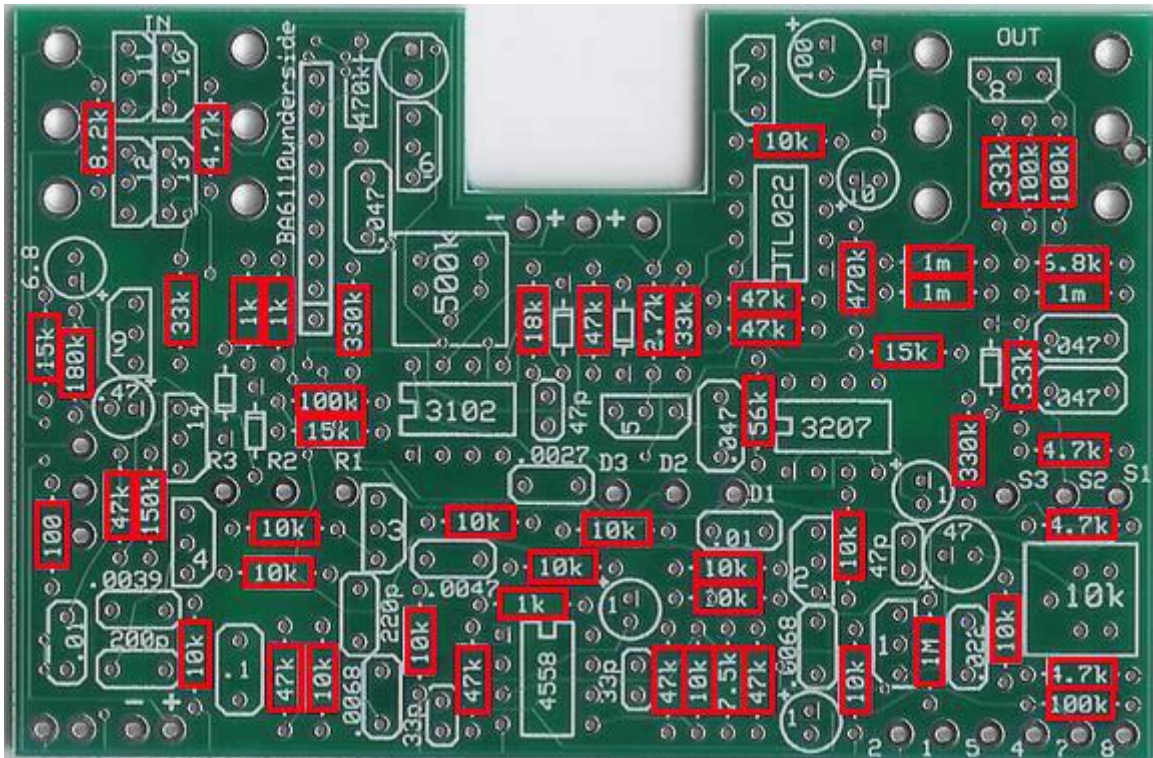
MISC.:

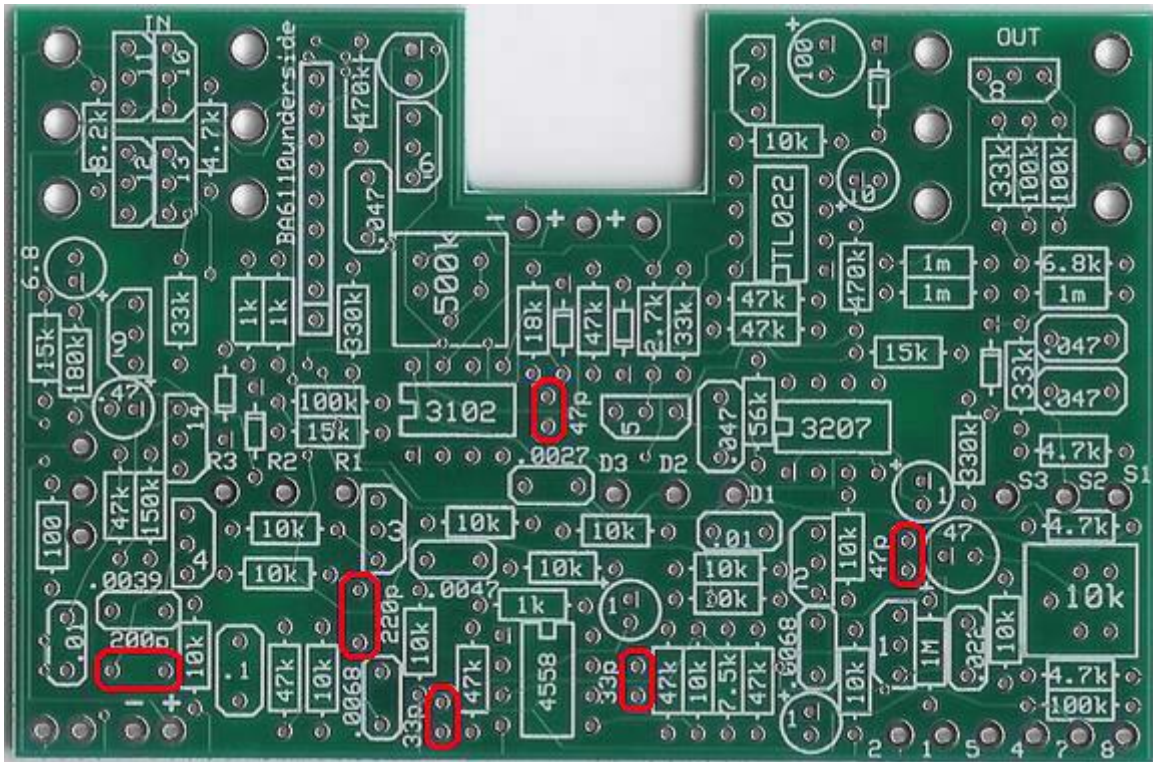
- 4 - DIP8 sockets
- 1 - SIP9 socket
- 1 - predrilled enclosure w/ screws
- 1 - ready to solder circuit board
- 1 - red LED
- 2 - 1/4" PCB mount stereo jacks
- 1 - AC adaptor jack
- 3 - knobs
- 1 - battery snap
- 4 - self-adhesive clear rubber bumpers
- hook-up wire

Populating the circuit board

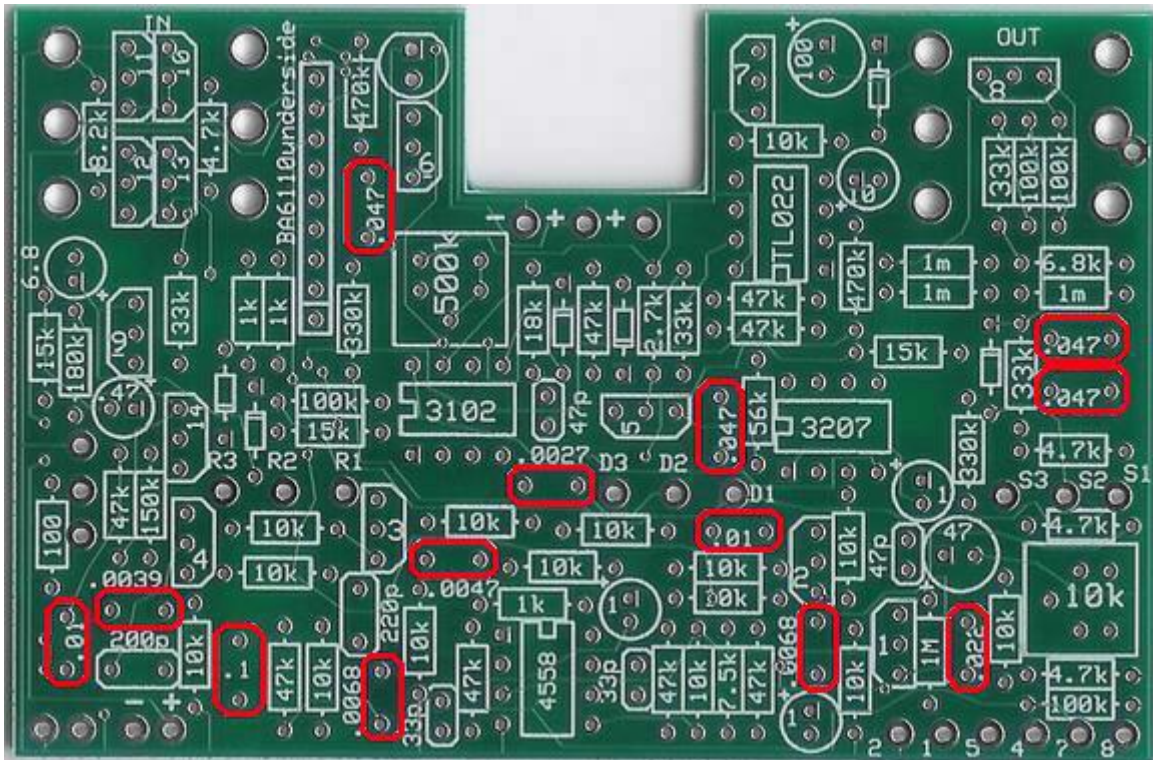


Step1: install all the diodes. Make sure the black stripe is facing the same direction as the stripe on the layout.

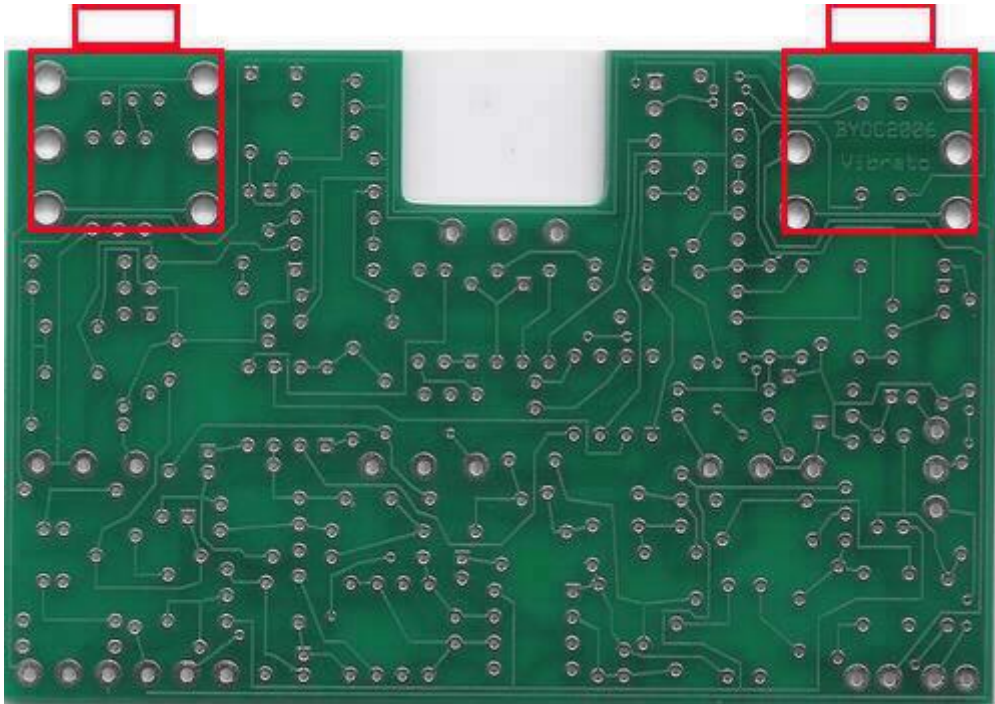




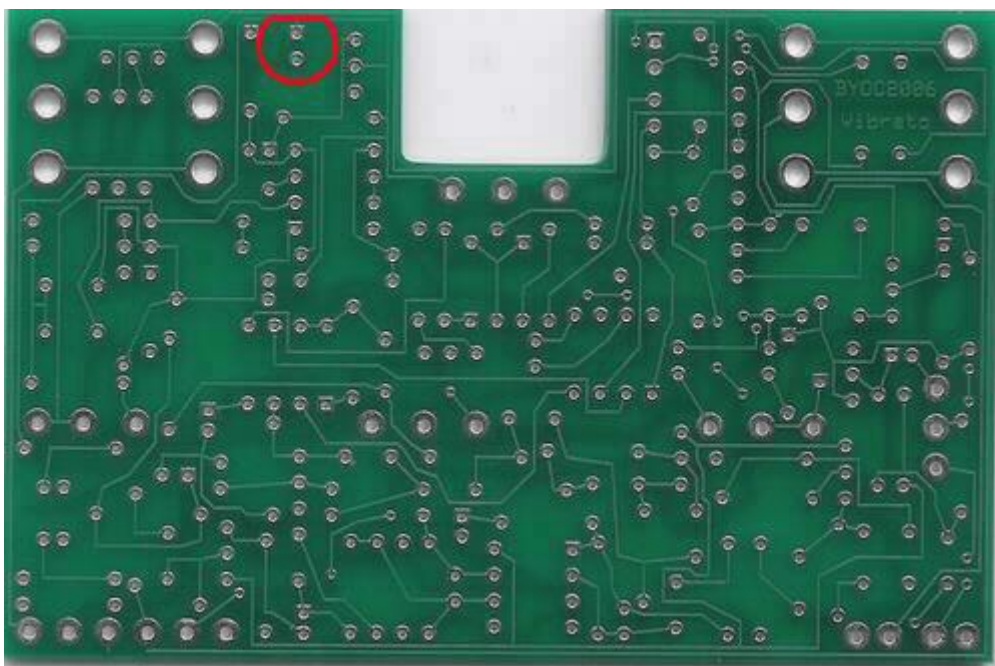
Step 10: Install the ceramic disc caps. These are not polarized and can go in either direction. They are the small orange “lolipop” caps.



Step 11: install the film caps. These are not polarized and can go in either direction.

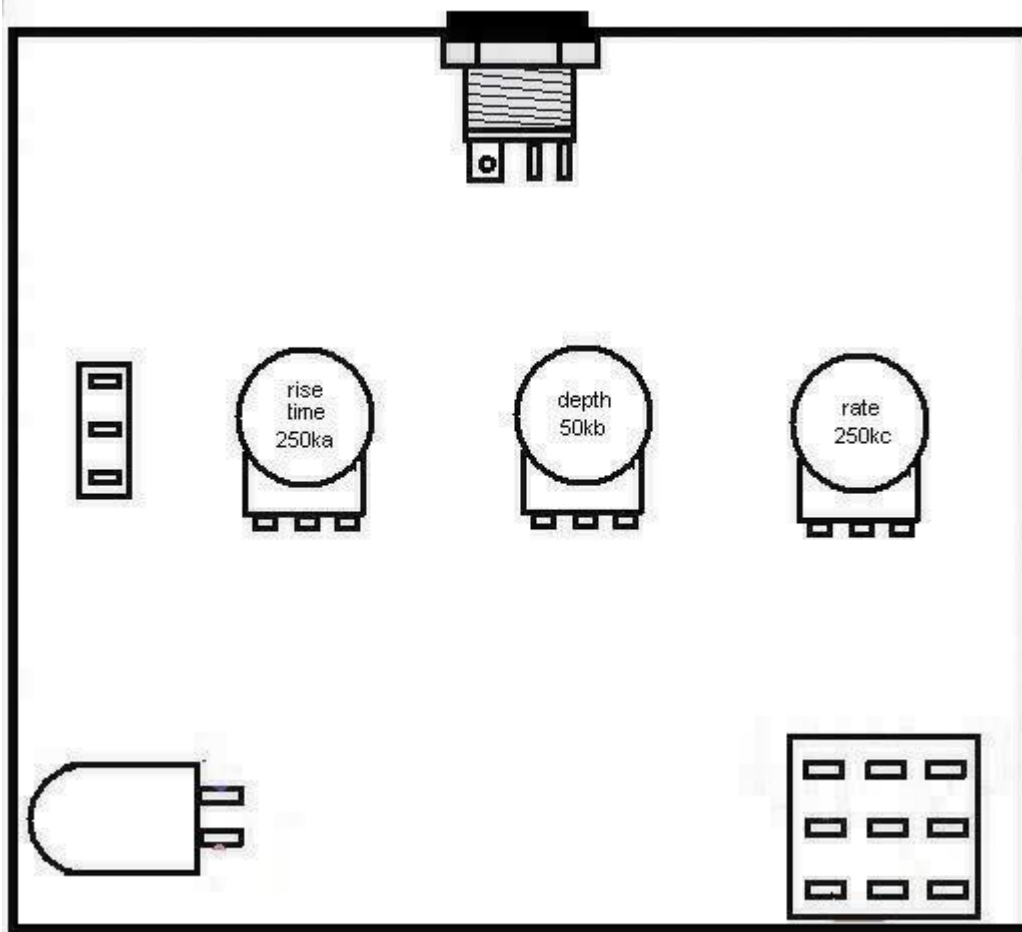


Step 14: Add the 1/4" jacks. Both are stereo, so it makes no difference which is "in" or "out". **MAKE SURE YOU SOLDER THEM TO THE UNDERSIDE OF THE BOARD!!!!**



Step 15: **DO NOT SOLDER!!!!!!!!!!!!!!!!!!!!!!!!!!!!!!** Only insert the LED into its place on the underside of the circuit board but do not solder it. This time the negative lead goes in the square solder pad. It will be the side that is flat. The positive lead goes in the round hole and will be the longer lead. Bend the leads on the top side so that the LED does not fall out. After you test the pedal and you are certain that it works, then you will position the LED into the hole in the enclosure and solder it. Once you solder it, it's very difficult to get the LED back in the enclosure hole if you take the board out to trouble shoot.

Assembly



1. Install the SPDT toggle switch **VERY IMPORTANT!!!!** Take off the extra nut and washer from the inside of the brushing so that there is only one nut and one washer (the serrated washer) on the outside of the enclosure so the body of the switch is flush against the inside of the enclosure. When the switch is in the up position, this will be “ramp on”.
2. Install the pots so that the depth pot is in the middle, the rate pot is on the right and the rise time pot is on the left.
3. Install the footswitches so that the ramp switch is on the left and the bypass switch is on the right. Orientate the bypass switch so that the solder lugs are facing horizontally. The ramp switch is a SPST switch, so it doesn't matter which is the pole and which is the throw.
4. Install the AD adaptor jack. Orientate it so that the negative “tip” terminal is on the left, the battery connect + terminal is in the middle and the constant + terminal is on the right.

Finishing Up

1. Test the pedal to make sure it works properly before you solder the LED.
2. Add all the IC's to their sockets. The DIP8 ICs may have a “u-shaped” notch. If they do, match them up with the notch in the socket that should also be matched up with the layout. If there is no notch, then there should be a small dot in the corner of the IC that denotes pin 1. Pin 1 on the circuit board will always be denoted by a square solder pad. The SIP9 IC will have a notch between Pin1 and Pin2 and should be matched up with the line on the layout.
3. Adjust the trim pots as describe earlier.
4. If everything works, unbend the LED leads and guide it into its hole in the enclosure. You probably don't want to push the LED in as far as it will go. Just push it in far enough so that it is flush with the outside of the enclosure.

Hold the LED in place and solder it.

5. Put the lid on the enclosure, screw it down, and then apply the self adhesive rubber bumpers.

If you are having trouble, please visit board.buildyourownclone.com for tech support.